

Mechanical Lockout Brake



A simple mechanical brake for stopping, holding and locking out industrial fans, turbines, and other large rotating equipment

The Stearns Lockout Brake is a mechanical, manually-actuated caliper disc brake, which easily adapts to standard shaft couplings.

Safety

- No more stopping equipment with 2x4's or ropes
- Provides lockout capability according to safety standards for lockout/tagout
- A more reliable means for controlling the potential for equipment free-wheeling
- Allows personnel to be in direct control of equipment during maintenance activities
- Actuation can be done outside of coupling guards
- Simple operation
- Easy actuation using a standard 15/16" socket or wrench



No More Ropes!

Why choose Stearns Lockout Brake?

Features	Functions	Benefits
Cross-Pin Locking Feature	Equipment lock out	Safety of plant personnel
Actuation Features	Safely stops equipment	Safety of plant personnel
Critical Components Made from 316 Stainless Steel (or finished steel)	Corrosion resistant	Extended service life Reduced maintenance Low cost of ownership
Remote actuation (optional)	Not necessary to remove guards to stop equipment	Safety of plant personnel Easy operation
Simple, Low Maintenance Design	Nothing to "go wrong" or seize in corrosive environments	Reduced maintenance Low cost of ownership
Universal Mounting	Brake mounting position at 3 o'clock, 6 o'clock or 9 o'clock	Easy installation Reduced maintenance cost
Optional Proximity Sensor	Ensures motor protection against locked rotor	Safe motor starts Reduced maintenance
Static Torque	200 - 400 lb-ft (with a 14" diameter disc)	
Maximum Kinetic Energy Dissipation	330,000 ft-lb (600 lb-ft ² maximum system inertia at 1800 rpm)	

Unit Pricing (Consult Stearns for Discounts)

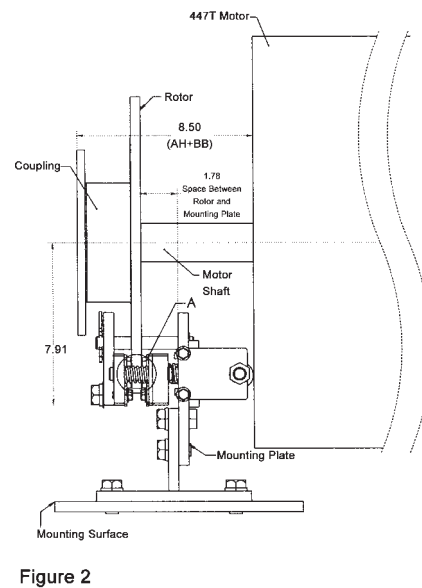
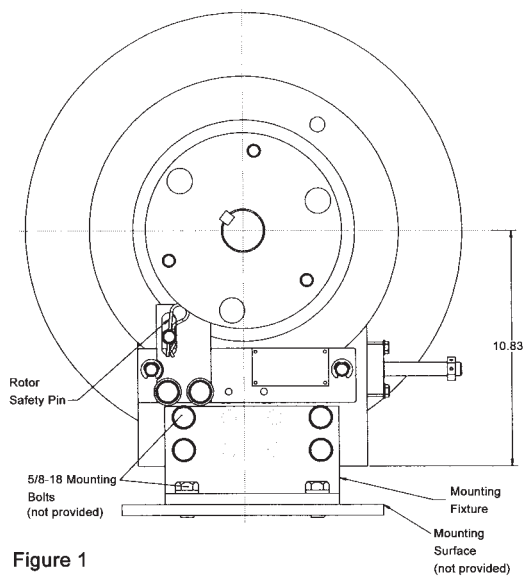
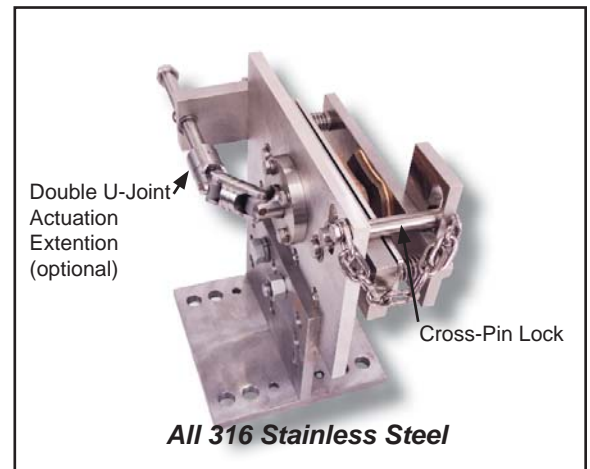
Model	Material	List Price*	Price Adder Remote Actuation**
7MC	316 SS	\$2,800.00	\$1,025.00
7MC	Finished Steel	\$1,075.00	\$575.00

*Includes typical 14" dia. disc (for 200-400 lb-ft static torque)

**List price adder for remote actuation double u-joint extension

Ordering Information - Specify:

- Model: 7MC
- Disc diameter/required torque
- Coupling brand (to which the brake disc will be bolted. Customer to provide coupling drawing)
- Brake mounting position: 3, 6 or 9 o'clock



Copyright© 2008 rexnord Industries, LLC

Rexnord Industries, LLC, Stearns Division, 5150 S. International Drive, Cudahy, Wisconsin 53110

Phone: 414.272.1100 Fax: 414.277.4364

www.stearns.rexnord.com